



## Upgrade Kit B5048 for 3.6 MW Yaw Brake Pump

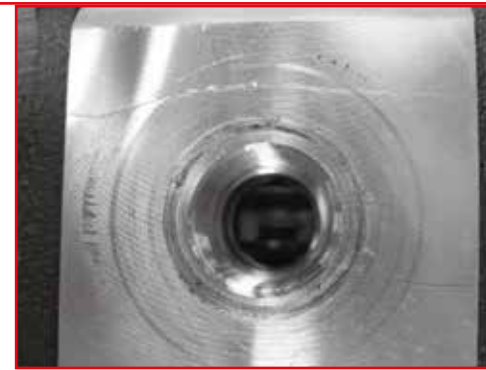
Applies for the following item numbers: B3251

### Purpose

A new upgrade solution is now available for the yaw brake pump for 3.6 MW turbines.

When replacing the pump for the Yaw Brake on the 3.6 MW turbines, the design has been improved to minimize the stress on the housing of the pump, and as such the connectors have also been re-designed to support this feature.

This upgrade kit will ensure that the housing of the pump, including connectors, will be exposed to less stress, which again ensures, that the time of life of the pump is substantially extended. = **MINIMIZE DOWNTIME**



Cracked pump due to excessive stress

### Solution

The solution is been thoroughly tested.



### Facts

The kit is currently installed in numerous turbines throughout Europe, and the new design supports the stability and functionality for long life time of the pump installation for the Yaw brake.

The manual with instructions for replacing the current pump with this upgraded solution can be retrieved by contacting our service team in Denmark. We are looking forward to support you.

# Hydratech Industries

Your

Regular

Maintenance

Supplier of

- *More than 30 years experience*
- *Competitive prices*
- *Technical support*
- *Spare parts & repair*
- *Online access to documentation*

- Pitch Cylinders
- Filters
- Burst Discs
- Valves
- Accumulators
- Pumps
- Motors
- **Upgrade Kits**
- Complete Hydraulic Units

Contact us 24-7

## Denmark

Suensonsvej 14  
DK-8600 Silkeborg

E-mail: [servicehwp@hydratech-industries.com](mailto:servicehwp@hydratech-industries.com)  
Tel.: +45 8722 8181

## USA

P.O. Box 2618  
22955 McAuliffe Dr.  
Robertsdale, AL 36567

E-mail: [servicehwpUS@hydratech-industries.com](mailto:servicehwpUS@hydratech-industries.com)  
Tel.: +1 251 947 5300